

A+

R32



one

wall-mounted air conditioners

KRX 09 | 12 | 18 | 24 AEXI



The Kaisai One wall mounted air conditioner is an energy-efficient appliance combining modern design with exceptionally simple installation, maintenance, and cleaning.

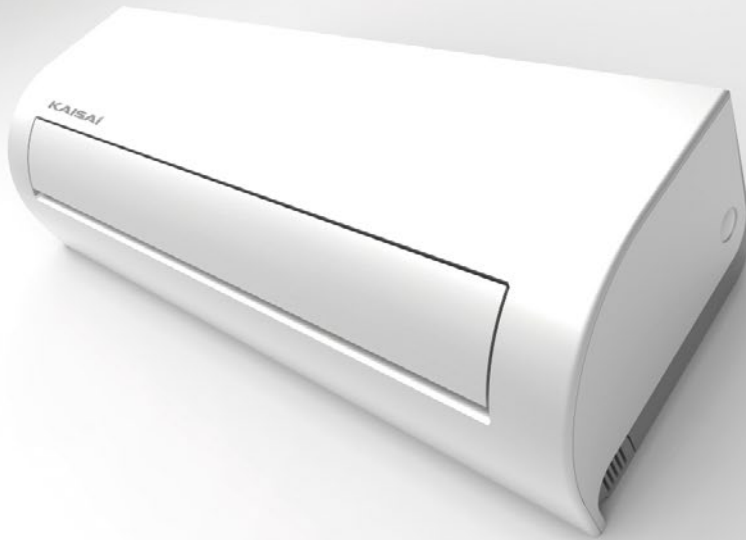
The new design of the air conditioner, with its properly shaped casing, and the optimised arrangement of the individual components inside the unit, help save time during installation and daily operation.

By using modern technology and the R32 refrigerant, the air conditioner can operate in a wide range of outdoor temperatures: from -15°C to +50°C in the cooling mode, and from -25 to +30°C in the heating mode.

Comfort of use is provided by a modern wireless remote control and a Wi-Fi function as standard, to control the device using your mobile phone or tablet.



KRX 09 | 12 | 18 | 24 AEXI



particularly
easy to install,
maintain
and clean



UNIT FUNCTIONS



Wide range of temperatures



Simple installation



Memory of louvers settings



Indication of refrigerant leakage



Operation at low outdoor temperature



Self-diagnosis



Emergency use



Control Wi-Fi



Standby mode



8°C heating function



Evaporator self-cleaning



Temperature sensor in remote control unit



3D air flow



Timer



Automatic restart



Sleep function



Catalytic filter



Filter with silver ions



Filter with C vitamin



3M filter

OPTION

OPTION

OPTION

TECHNICAL SPECIFICATION

MODEL	indoor unit		KRX-09AEXI	KRX-12AEXI	KRX-18AEXI	KRX-24AEXI
	outdoor unit		KRX-09AEXO	KRX-12AEXO	KRX-18AEXO	KRX-24AEXO
Capacity average (min÷max)	cooling	kW	2,6(1,2÷3,4)	3,5(1,4÷4,6)	5,3(2,0÷6,2)	7,2(2,1÷8,4)
	heating	kW	2,9(0,8÷3,4)	4,1(0,9÷5,1)	5,7(1,3÷7,0)	7,6(2,1÷9,4)
Energy class	cooling/heating		A++/A+	A++/A+	A++/A+	A++/A+
SEER	average	W/W	6,8	6,3	6,7	6,4
SCOP	average	W/W	4,0	4,0	4,0	4,0
Power input average (min÷max)	cooling	W	737(100÷1312)	1250(110÷1740)	1500(150÷2220)	2260(230÷3010)
	heating	W	811(140÷1380)	1170(150÷1830)	1390(220÷2330)	2110(330÷3150)
Operation current average (min÷max)	cooling	A	3,1(0,4÷6,0)	5,4(0,5÷7,6)	6,5(0,7÷9,7)	9,8(1,0÷13,1)
	heating	A	3,5(0,6÷6,3)	5,1(0,7÷8,0)	6,0(1,0÷10,1)	9,2(1,4÷13,7)
Air flow	indoor	m³/h	486/433/329	550/490/360	810/720/550	1050/970/650
	outdoor	m³/h	2000	2000	2100	2700
Operating temperature cooling/heating	indoor	°C	17÷32/0÷30	17÷32/0÷30	17÷32/0÷30	17÷32/0÷30
	outdoor	°C	-15÷50/-25÷30	-15÷50/-25÷30	-15÷50/-25÷30	-15÷50/-25÷30
Sound pressure level	indoor	dB(A)	41/35/29/20	41/37/30/23	45/41/33/24	46/44/35/27
	outdoor	dB(A)	55	55	57	59
Net dimensions w/h/d	indoor	mm	717x302x193	805x302x193	964x325x222	1106x342x232
	outdoor	mm	770x555x300	770x555x300	800x554x333	845x702x363
Transport dimensions w/h/d	indoor	mm	785x375x285	875x375x285	1045x405x305	1195x420x315
	outdoor	mm	900x585x345	900x585x345	920x615x390	965x765x395
Net weight	indoor	kg	7,8	8,2	10,8	14,3
	outdoor	kg	27,0	27,2	37,0	50,0
Transport weight	indoor	kg	10,3	10,9	14,3	18,2
	outdoor	kg	29,4	29,7	39,9	53,1
Pipe diameter: liquid/gas		mm	6,35/9,52	6,35/9,52	6,35/12,7	9,52/15,9
Total length of installation		m	25	25	30	50
Max. level difference		m	10	10	20	25
Power supply	outdoor	V/Hz/Ph	220÷240/50/1	220÷240/50/1	220÷240/50/1	220÷240/50/1
Circuit breaker/fuse	outdoor	A	10	16	16	20
Power supply lines	outdoor	# of wires x mm²	3x1,5	3x1,5	3x2,5	3x2,5
Control lines	ind. - outd.	# of wires x mm²	5x1,5	5x1,5	5x1,5	5x1,5
Factory amount of refrigerant	up to 5 rm	kg	0,7	0,8	1,25	1,6
Additional amount of refrigerant	over 5 rm	g/m	12	12	12	24

ACCESSORIES AND CONTROLLERS



WIRELESS CONTROL UNIT
RG66A1



WIRELESS CONTROL UNIT
RG57 (OPTION)



WIRED CONTROLLER
KJR-120X2 (OPTION)



CENTRAL CONTROLLER
CCM03 (OPTION)